

Quick Start Guide

Instant forwarding Caller ID to IP
Mobile phone number verification solution

CIP101 / CIP102
CIP104 / CIP108
Phone Validator



Package Contents

- Verification device
- Telephone cable RJ11
- RS232 crossover cable
- SD card
- Wall mount sheet
- Power adaptor
- Ethernet cable RJ45
- Quick start guide
- USB drive
- Screw kit

■ The accessories of each model will be different

More Info

For technical support, user's guide, develop kit and other information, please visit <https://en.24x7.tw/way/show/support> or scan the QR Code



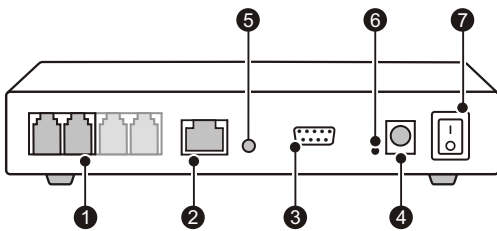
Printed in Taiwan
CIP UG EN V1.0
2021.08.01



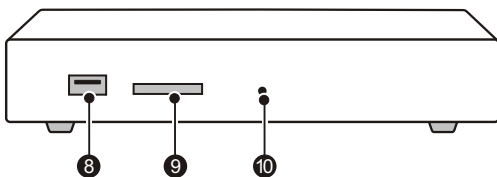
Documentation would be different for various model.
Contents are subject to change without further notice

Appearance

CIP101/CIP102

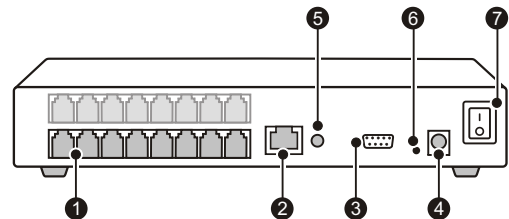


- 1. Line / Phone port
- 2. Ethernet port
- 3. RS232
- 4. DC 12V
- 5. Reserved
- 6. RS232 indicator
- 7. Power ON/OFF

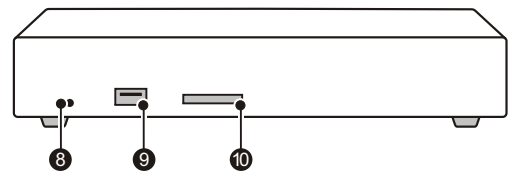


- 8. USB port
- 9. SD card
- 10. Power indicator

CIP104/CIP108

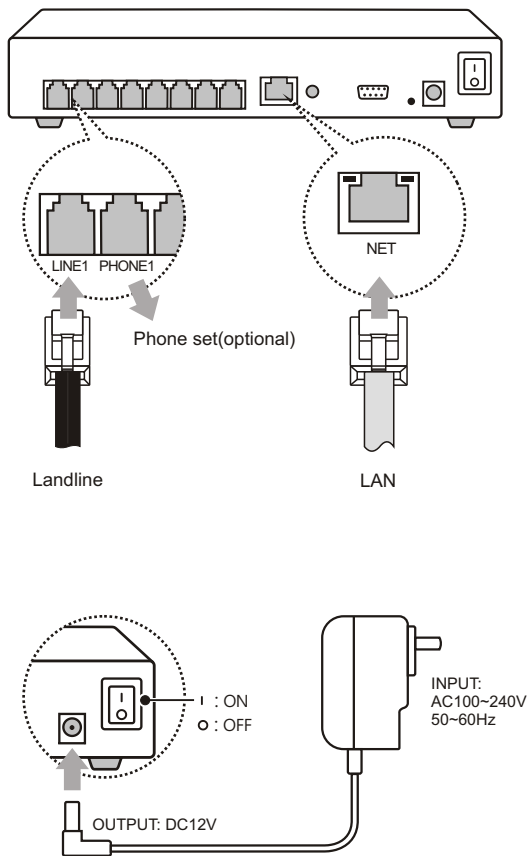


- 1. Line / Phone port
- 2. Ethernet port
- 3. RS232
- 4. DC 12V
- 5. Reserved
- 6. RS232 indicator
- 7. Power ON/OFF



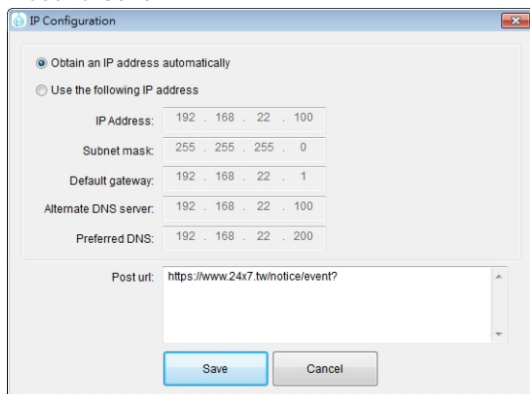
- 8. Power indicator
- 9. USB port
- 10. SDCard

Connection



Forwarding IP address setup wizard (For Windows user only)

1. Plug the resource USB drive into PC and run Config.exe
2. Select device IP: [Statics IP] or [Obtain an IP address automatically]
3. [Forward Caller ID to IP]: Input the IP address to receive the inbound Caller ID

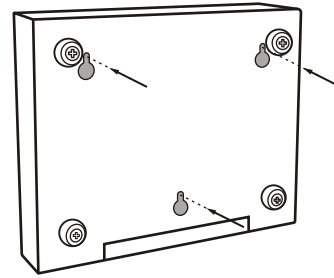


4. Click [Save] to generate the configuration file < device_config.dat >
5. Update the device parameter with
 - a. Save device_config.dat to device SD card and insert it back
*There would be beep alert if SD card is pulled out until it is inserted back
 - b. Save device_config.dat to USB drive (FAT format) and insert it to device

Verifier system will be updated automatically when the SD card or USB drive is detected. The verifier will be restarted after updated.

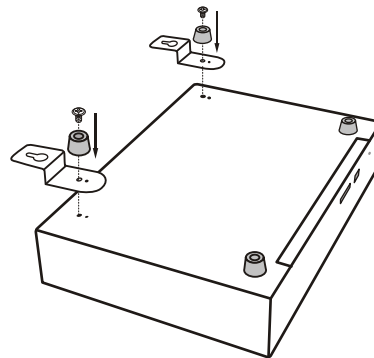
Wall mount installation

CIP101/102: install the CIP101/102 on the wall with screw and device bottom hole



CIP104/108:

1. Unscrew the 2 of device bottom stand, insert the wall-mount sheet and screw the stand back
2. Install the CP104/108 on the wall with wall-mount sheet and screw



For developers

We provide development SDK in USB drive, please keep it properly
CIP101 Single line Verifier , CIP102 2 Line Verifier , CIP104 4 Line Verifier , CIP108 8 Line Verifier

Data Transfer to web server IP:

Remote : Server receives the inbound call data via http(s) POST
Local : PC receives the inbound call data via RS232 connection

Data content:

1. Inbound Caller ID
2. Outbound Caller ID
3. Line status including idle, hook-on, hook-off, ringing and disconnected
4. Event time
5. Ringing time detection
6. Device ID
7. Line ID

Issue command to verifier device:

Remote : Server issues command to verifier device via WebSocket
Local : PC issues command to verifier device via RS232 connection

Command contents:

1. Hook-off
2. Dialing
3. Hook-on