



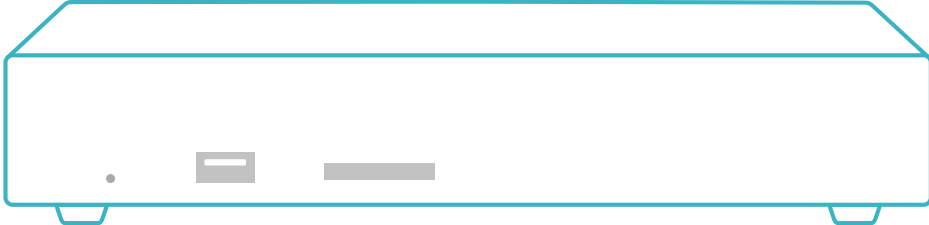
CIP Series

Phone Number Verification Solution

Forward Caller ID to IP

CIP101 / CIP102 / CIP104 / CIP108

Phone Number Verifier



 DTMF / FSK
Dual

 RJ11
Landline

 100Mbps
Ethernet

 HTTP(S)
Data transfer

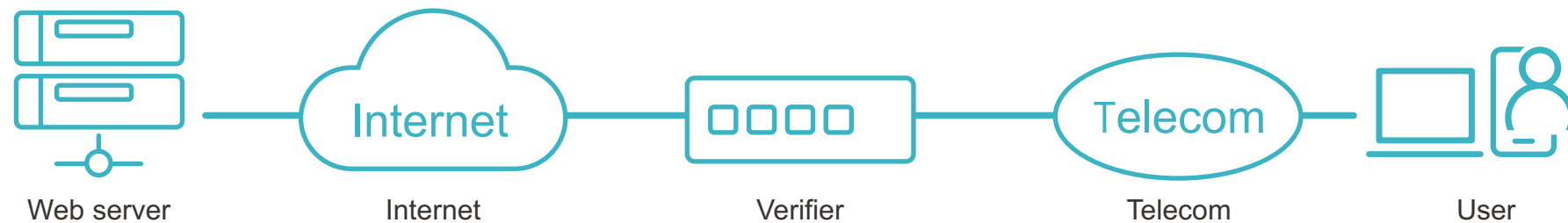
 Capacity
expandable

 Easy & Quick
Installation

 Free
of charge

FORWARD CALLER ID TO IP

We provide development SDK for your web server integration. After setup the system, you may achieve instant verification of user's mobile phone number by CIP101 / CIP102 / CIP104 / CIP108



Application:

User enters the verification process of your webpage or App

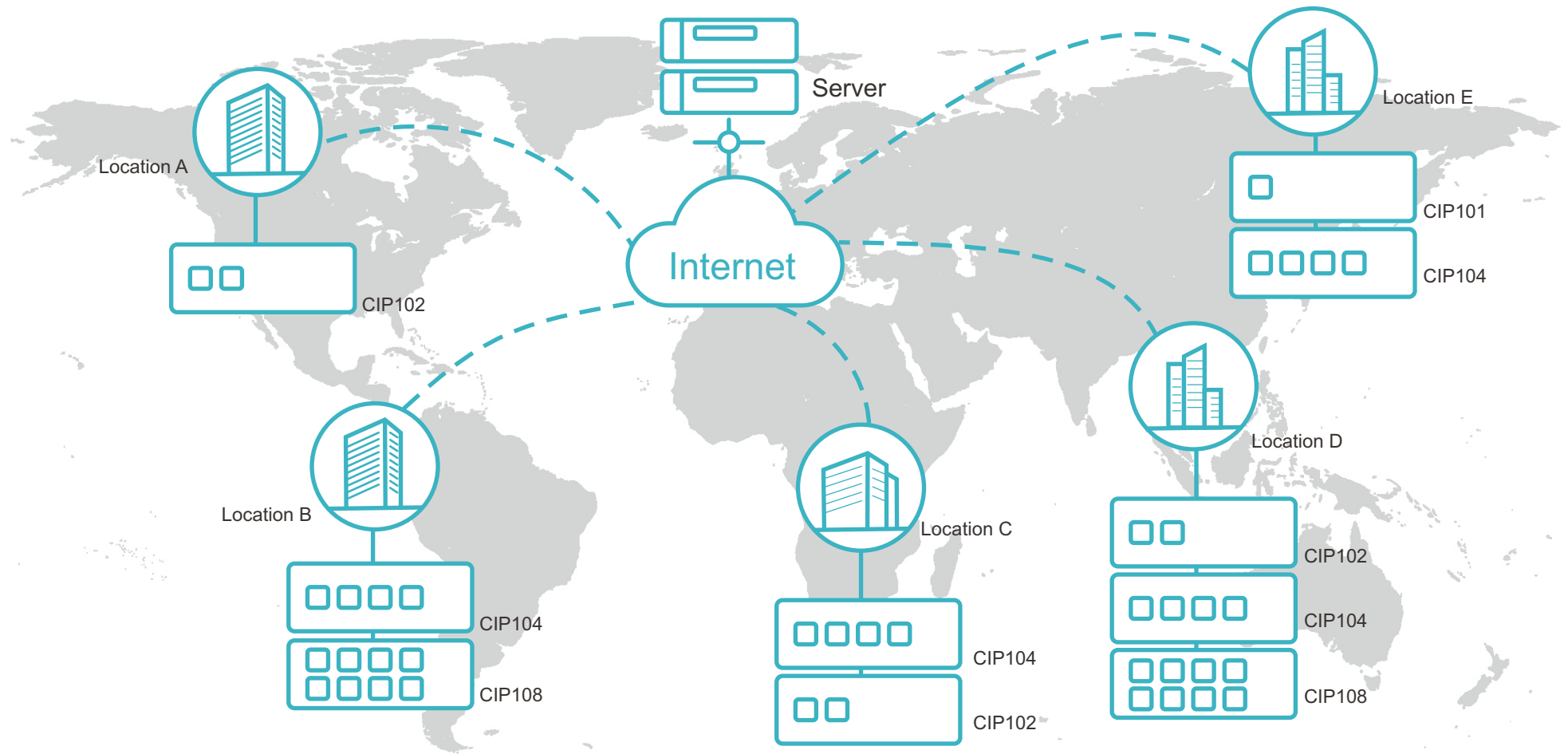
- User dials the designated number via registered mobile number
- Verifier CIP101 / CIP102/ CIP104 / CIP108 forwards the user inbound Caller ID to IP
- The verification completed once user profile comparison succeed

MULTI-SITES CONSTRUCTION

Configure the same forwarding IP in multi-sites verifiers, allocated different system telephone number to devices.

Verification process will be effective, alternative and safe.

All verifier CIP101 / CIP102/ CIP104 / CIP108 can be mixed or expanded.



FEATURES



Application development

Easy documentation for engineer effective development



Mobile number/Landline number verification

User dials system phone number to verify the mobile number through verifier Caller ID forwarding



Web application from inbound call

User calls the designated number via registered mobile number, the verifier will push the caller ID to IP for various application.



Easy & Simple installation

All you need is a device connected with landline and network



24x7 Non-stop Phone number verification

Instant forwarding inbound caller ID to web server IP for online verification

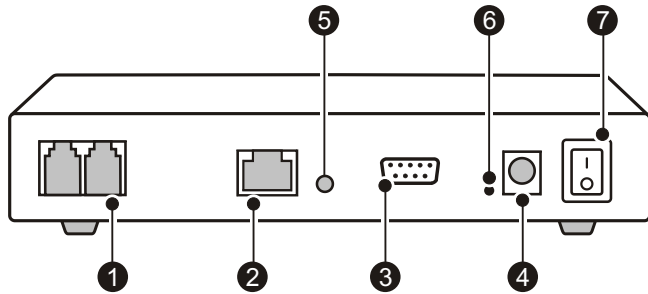


Free of charge for both user and platform during verification

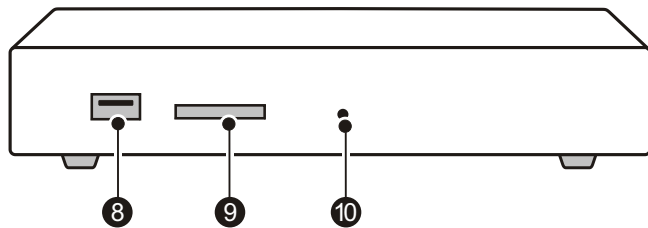
Without answering the phone call, device will collect the inbound Caller ID. Neither the user nor the platform needs to pay for the call

APPEARANCE

CIP101 / CIP102

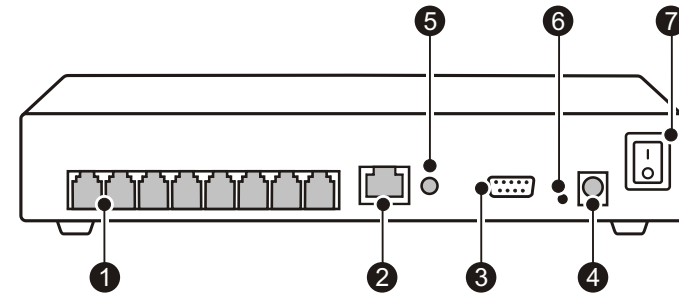


- 1. Line/Phone
- 2. Ethernet port
- 3. RS232
- 4. DC 12V
- 5. Reserved
- 6. RS232 indicator
- 7. Power ON/OFF

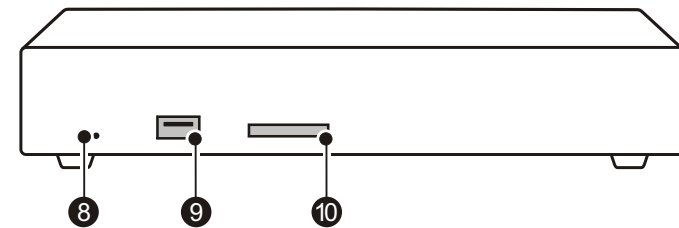


- 8. USB port for update
- 9. SD card slot for storage and update
- 10. Power indicator

CIP104 / CIP108



- 1. Line/Phone
- 2. Ethernet port
- 3. RS232
- 4. DC 12V
- 5. Reserved
- 6. RS232 indicator
- 7. Power ON/OFF



- 8. Power indicator
- 9. USB port for update
- 10. SD card slot for storage and update

CIP101 / CIP102 SPECIFICATION

Size and Weight

Set Size : 180x143x32 mm (WxHxD)

Package Size : 260x230x76 mm (WxHxD)

Set Weight : 0.68kg

Package Weight :1.2Kg

In the Box

Verifier

Power Adaptor

RJ11 Phone Cable

RJ45 Ethernet Cable

RS232 Crossover Cable

Screw kit

SD card

USB drive

Quick Start Guide

Others

Caller ID

Capacity : CIP101 1 Line / CIP102 2 Line

CID format : DTMF/FSK

CID intensity : 0dB to -32dB

Input impedance : AC : 100K Ω · DC : 5.1M Ω

S/N ratio : >60dB

Signal-to-crosstalk ratio : >70dB

Power Consumption

Rating operating current : 0.5A

Max. working current : 1.2A

Rating power : 6W

Interface

Power : Input AC100-240V Output DC12V 1A

RJ11 in : Telecom Landline

RJ11 out : Phone set

RJ45 : Ethernet LAN

Environmental Requirements

Operating temperature : 0°C~40°C (32°F~104°F)

Storage temperature : -40°C~70°C (-40°F~158°F)

Relative humidity : 10%~90% noncondensing

Storage humidity : 5%~90% noncondensing

CIP104 / CIP108 SPECIFICATION

Size and Weight

Set Size : 252x176x42 mm (WxHxD)

Package Size : 310x230x127 mm (WxHxD)

Set Weight : 1.7kg

Package Weight : 2.5Kg

In the Box

Verifier

Power Adaptor

RJ11 Phone Cable

RJ45 Ethernet Cable

RS232 Crossover Cable

Wall mount sheet

Screw kit

SD card

USB drive

Quick Start Guide

Others

Caller ID

Capacity : CIP104 4 Line / CIP108 8 Line

CID format : DTMF/FSK

CID intensity : 0dB to -32dB

Input impedance : AC : 100K Ω · DC : 5.1M Ω

S/N ratio : >60dB

Signal-to-crosstalk ratio : >70dB

Power Consumption

Rating operating current : 1A

Max. working current : 1.5A

Rating power : 20W

Interface

Power : Input AC100-240V Output DC12V 2A

RJ11 in : Telecom Landline

RJ11 out : Phone set

RJ45 : Ethernet LAN

Environmental Requirements

Operating temperature : 0°C~40°C (32°F~104°F)

Storage temperature : -40°C~70°C (-40°F~158°F)

Relative humidity : 10%~90% noncondensing

Storage humidity : 5%~90% noncondensing

FAQ

What is the construction cost for mobile number verifier?

All you need are the verifier, telecom landline and network.

Is there any extra cost on phone number verification?

Besides regular telecom and network subscribe fee, all free of charge on both user and platform with Caller ID verification

How is the device capacity?

CIP101/1 Line CIP102/2 Lines CIP104/4 Lines CIP108/8 Lines

The equipment can be mixed and expanded unlimited for concurrent verification requirement.

Can an oversea phone number be verified?

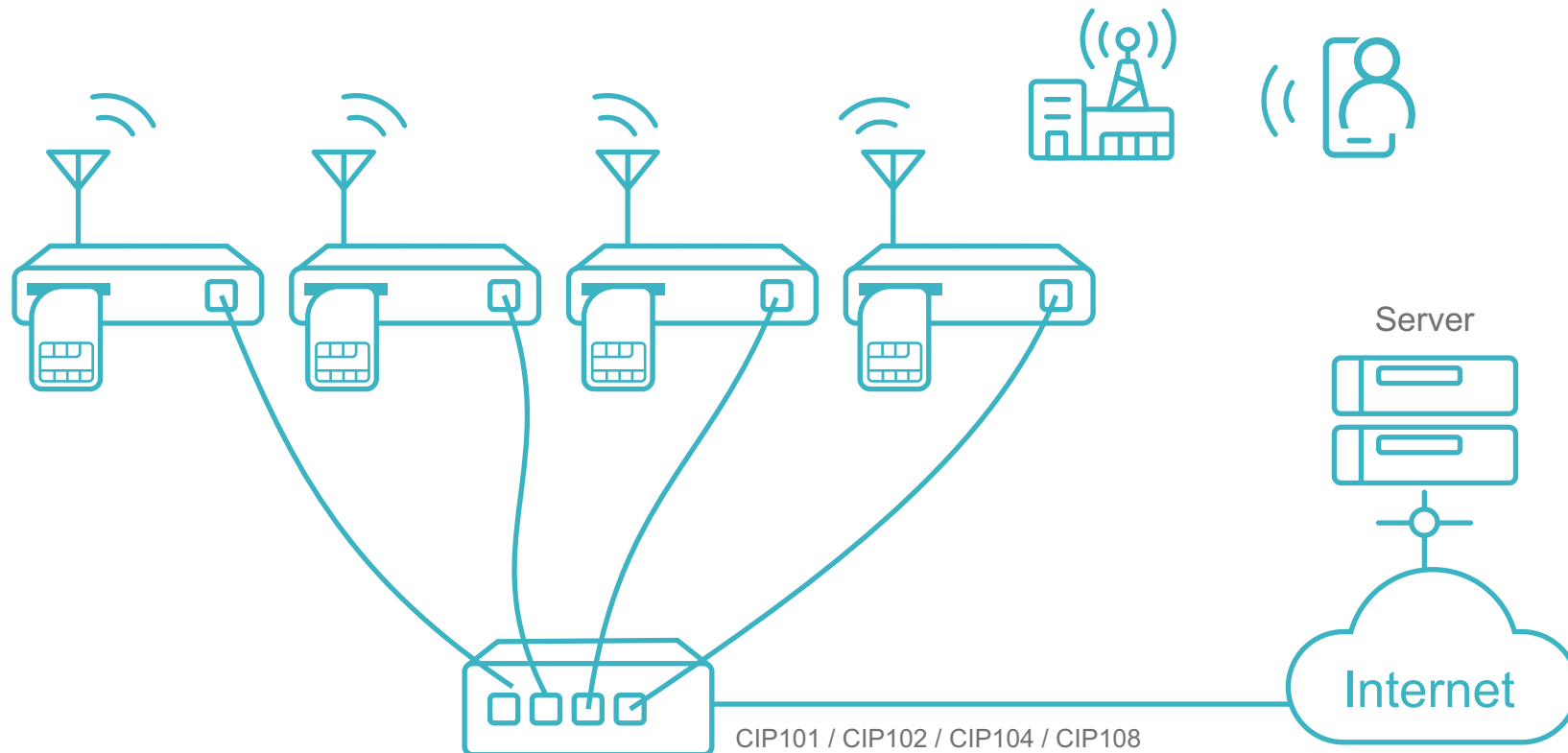
An oversea phone number also can be verified once the user dials the designated number with country code.



For technical support, user's guide, develop kit and other information , please visit <https://en.24x7.tw/way/show/support> or scan the QR Code

Appendix: Using mobile number as your verification system number

You may use mobile number as system verification line. It is an option to expand the system verification capacity.
CIP device works with mobile number via a wireless terminal.



*Any request for wireless terminal, please free to contact <http://www.24x7.tw>